



Drawing No: WE12-SC001L  
 Date: 15/12/2023  
 Scale: 1:500 @ A0

Open Space

Proposed residential development at  
**Land South of Bluebell Road, Tewkesbury**

November 2023

© 2023 Bloor Homes Limited and may not be reproduced or transmitted in any form or by any means, electronic or mechanical, including photocopying, recording, or by any information storage and retrieval system. All rights reserved. No liability is accepted for inaccuracies, errors or omissions. Plans shown are for illustrative purposes only. Please refer to the Landmarking Strategy for details.

- ✦ Social Rent
- ✦ Shared Ownership





Drawing no: WE12-PD-080C (Street Scenes)  
 Drawn: FM  
 Date: May 2024  
 Scale: 1:200 @ A1



Indicative street scene plots 115 - 114



House Type 10 - 2 Storey Semi-Detached



House Type 11 - 2 Storey Semi-Detached



Indicative street scene plots 71 - 78



House Type 12 - 2 Storey Semi-Detached



House Type 13 - 2 Storey Semi-Detached



House Type 14 - 2 Storey Semi-Detached



Indicative street scene plots 1 - 5



House Type 15 - 2 Storey Semi-Detached



House Type 16 - 2 Storey Semi-Detached



House Type 17 - 2 Storey Semi-Detached



\*Site layout not to scale



Indicative street scene plots 61 - 56



Plot 61 - 56



Plot 56 - 61



Indicative street scene plots 21 - 1



Plot 21 - 1



Plot 1 - 21



Plot 21 - 1



Plot 1 - 21





CLANSS.M3B5P-1  
SIDE ELEVATION

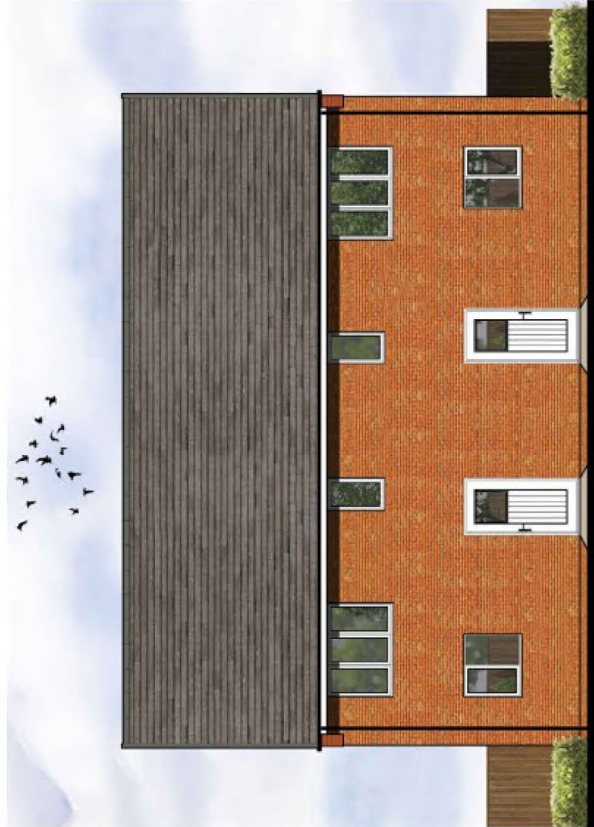


CLANSS.M3B5P  
SIDE ELEVATION



CLANSS.M3B5P-1

CLANSS.M3B5P  
FRONT ELEVATION  
Refer to materials plan for individual plot finishes



CLANSS.M3B5P

CLANSS.M3B5P-1  
REAR ELEVATION

National Space Standards	
	NSS Requirement
Ground Floor Plan	46.51m <sup>2</sup>
First Floor Plan	46.51m <sup>2</sup>
Total floor area m <sup>2</sup>	93.02m <sup>2</sup>
Total floor area ft <sup>2</sup>	1001ft <sup>2</sup>
Bedroom 1	12.82m <sup>2</sup>
Bedroom 2	11.91m <sup>2</sup>
Bedroom 3	7.73m <sup>2</sup>
Store Kitchen / Dining	1.93m <sup>2</sup>
Store Bathroom	0.56m <sup>2</sup>
Store Bedroom 3	0.77m <sup>2</sup>
Built in store total	3.27m <sup>2</sup>
	2.5m <sup>2</sup>

**Sutherland**  
**CLA BRICK**  
**NSS.M3B5P.PL-01**

DATE: APR 2023    REV:  
SCALE: 1:100 @ A3

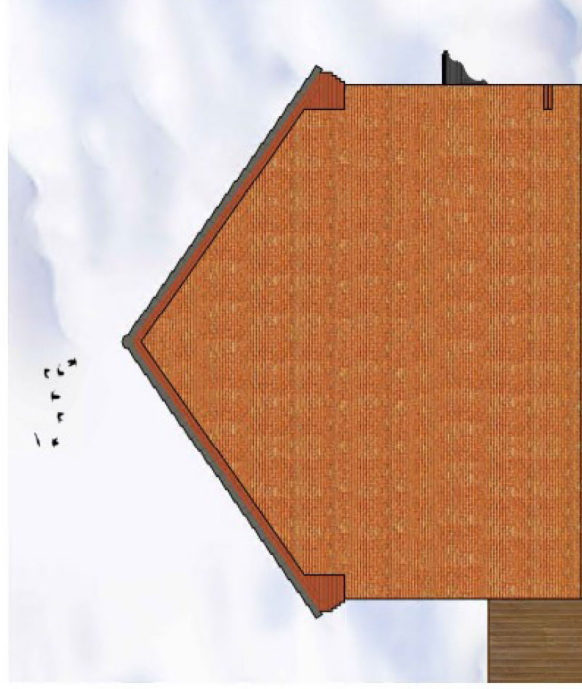
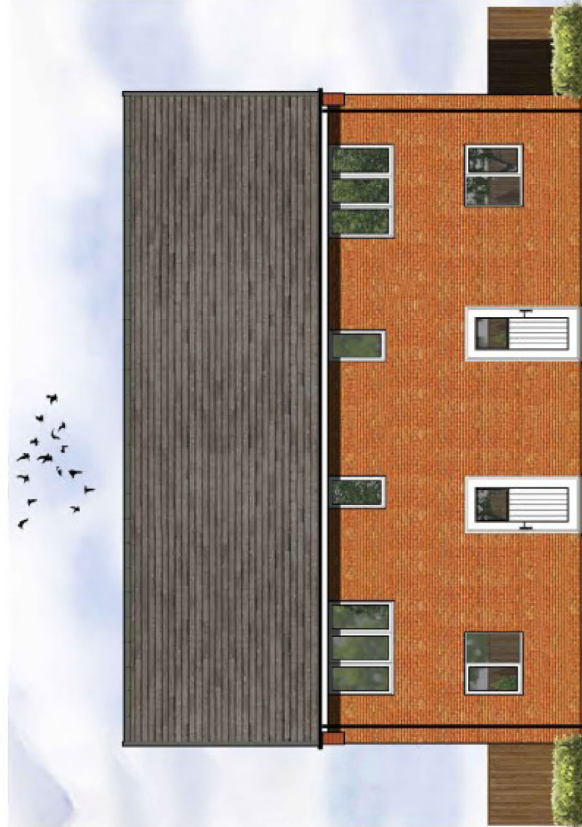
DRAWN: RW    93.02m<sup>2</sup>  
CHECKED: GPM    1001ft<sup>2</sup>





**CLANSS.M3B5P**  
**FRONT ELEVATION**  
 Refer to materials plan for individual plot finishes

**CLANSS.M3B5P-1**  
**SIDE ELEVATION**



National Space Standards	
	NSS Requirement
Actual Area	
Ground Floor Plan	46.51m <sup>2</sup>
First Floor Plan	46.51m <sup>2</sup>
Total floor area m <sup>2</sup>	93.02m <sup>2</sup>
Total floor area ft <sup>2</sup>	1001ft <sup>2</sup>
Bedroom 1	12.82m <sup>2</sup>
Bedroom 2	11.91m <sup>2</sup>
Bedroom 3	7.73m <sup>2</sup>
Store Kitchen / Dining	1.93m <sup>2</sup>
Store Bathroom	0.56m <sup>2</sup>
Store Bedroom 3	0.77m <sup>2</sup>
<b>Built in store total</b>	<b>3.27m<sup>2</sup></b>
	2.5m <sup>2</sup>

**Sutherland**  
 CLA BRICK  
 NSS.M3B5P.PL-01  
 DATE: APR 2023  
 SCALE: 1:100 @ A3  
 REV:

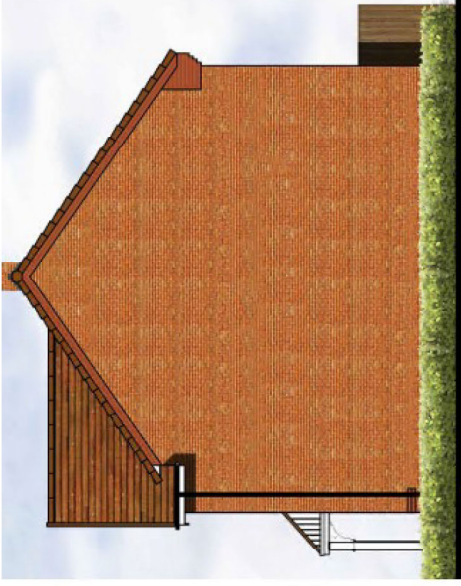




482

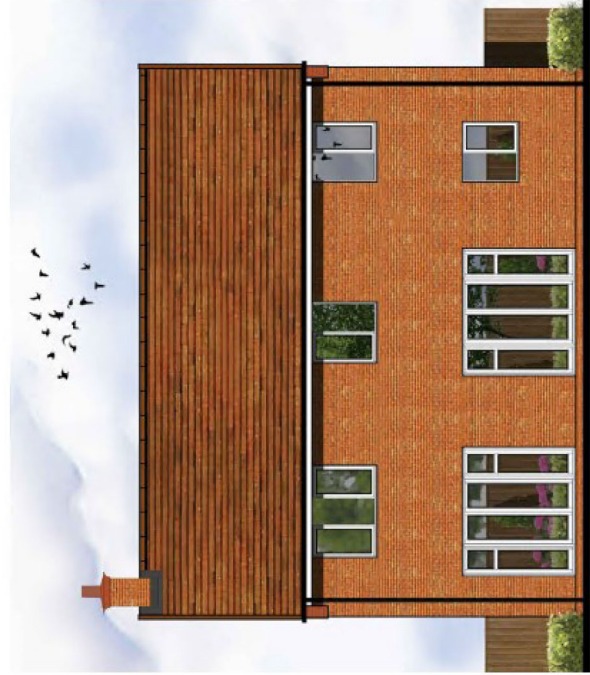
**FRONT ELEVATION**

Refer to materials plan for individual plot finishes



482

**SIDE ELEVATION**



482

**REAR ELEVATION**



482

**SIDE ELEVATION**

National Space Standards		NSS Requirement
Ground Floor Plan	71.27m <sup>2</sup>	
First Floor Plan	71.27m <sup>2</sup>	
Total floor area m <sup>2</sup>	142.54m <sup>2</sup>	106.00m <sup>2</sup>
Total floor area ft <sup>2</sup>	1534ft <sup>2</sup>	1141ft <sup>2</sup>
Bedroom 1	12.93m <sup>2</sup>	11.5m <sup>2</sup>
Bedroom 2	12.97m <sup>2</sup>	11.5m <sup>2</sup>
Bedroom 3	8.48m <sup>2</sup>	7.5m <sup>2</sup>
Bedroom 4	9.41m <sup>2</sup>	7.5m <sup>2</sup>
Kitchen Store	0.66m <sup>2</sup>	
Store Landing	1.13m <sup>2</sup>	
Store Bedroom 1	0.75m <sup>2</sup>	
Store Bedroom 3	0.76m <sup>2</sup>	
<b>Built in store total</b>	<b>3.31m<sup>2</sup></b>	<b>3.0m<sup>2</sup></b>

**PEELE  
BRICK  
482.PL-01**

DATE: JAN 2023

REV:

SCALE: 1:100 @ A3

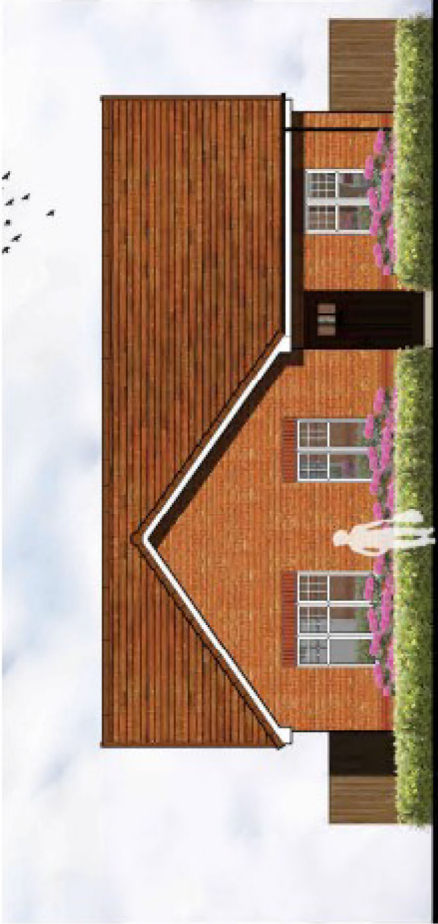
DRAWN: RW

144.31m<sup>2</sup>

CHECKED: GPM

1553ft<sup>2</sup>

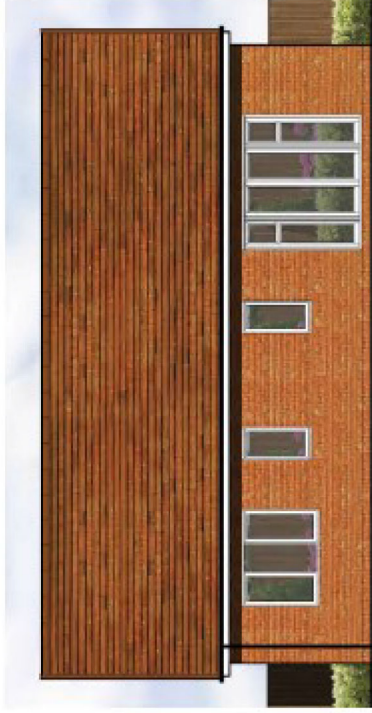




CLA303  
FRONT ELEVATION



CLA303  
SIDE ELEVATION



CLA303  
REAR ELEVATION



CLA303  
SIDE ELEVATION



303  
GROUND FLOOR PLAN

\* Denotes floor areas shown to comply with National Described Space Standards (see schedule). Room layout shown as furnished and does not demonstrate compliance.

National Space Standards	
3B4P	NSS Requirement
Ground Floor Plan	87.19m <sup>2</sup>
Total floor area m <sup>2</sup>	87.19m <sup>2</sup>
Total floor area ft <sup>2</sup>	939ft <sup>2</sup>
Bedroom 1	14.59m <sup>2</sup>
Bedroom 2	8.54m <sup>2</sup>
Bedroom 3 / Study	8.31m <sup>2</sup>
Store Hall	1.18m <sup>2</sup>
Store Bedroom 1	0.83m <sup>2</sup>
Store Service Cup'd	0.52m <sup>2</sup>
Built in store total	2.51m <sup>2</sup>
	2.5m <sup>2</sup>

# BELLINGHAM

## CLA BRICK

### 303-1.PL-01

DATE: JUN 2023  
SCALE: 1:100 @ A3

REV: 38.23m<sup>2</sup>  
950ft<sup>2</sup>  
DRAWN: JC  
CHECKED: MJE



Scale 1:100